



Dear Parent/ Carers,

It has been another busy week in school. Year 6 started the week as evacuees from 1939 and we have been so impressed with their engagement in and knowledge of this period in history.

Miss Pritchard held cross-country trials on Thursday. The level of participation from the children was fantastic; it was very hard for Miss Pritchard to choose from such a talented group of runners. The competition will take place next week and we wish the runners well.

The therapy dogs will shortly be visiting school, if you would like your child to be considered for a session to read with the dog, please complete the online consent form. Children may have to wait a few weeks before they can read with the dog.

[Consent for therapy dog](#)

Your child will have brought home a Christmas card design this week. If you wish to place an order for Christmas cards or other Christmas products, you must place the order online and return the design to school by Tuesday 30th September at the latest.

Have a wonderful weekend.

Best wishes,

Danielle Martin
Headteacher

Melbourne Junior School
Packhorse Road
Melbourne
Derby
DE73 8JE

Head Teacher: Miss D. Martin
Email: info@melbourne-jun.derbyshire.sch.uk
Web: www.melbourne-jun.derbyshire.sch.uk
Telephone: 01332 862344

Year 6 Evacuee day



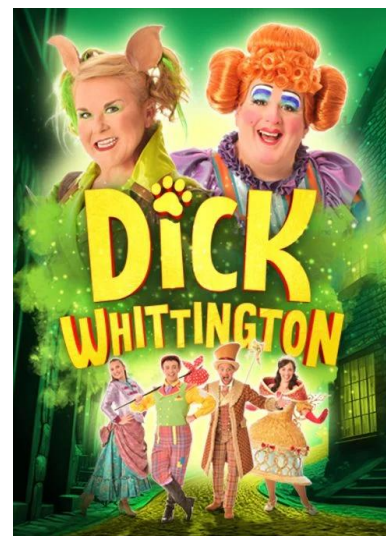
The children in Year 6 dressed up as evacuees for the day on Monday as part of their History topic. They looked amazing.

School Photos

The school photographer from Tempest will be coming into school on Friday 3rd October for individual school photos. If you have children at both Melbourne Infant and Junior Schools, you may bring them into school from 8.30am on Friday for sibling group photos. If your children are just at Melbourne Junior School, the sibling photos will be taken during the normal school day.

Pantomime

We are pleased to let you know that a whole school trip to see the pantomime Dick Whittington has been planned for Tuesday 16th December at Derby Arena. The cost of the trip is £17.90 which includes the theatre ticket and the cost of the coach to get there and back. Please can we request that payment is made by Friday 3rd October as we need to confirm numbers and pay for the theatre tickets in advance. If your child is eligible for Free School Meals, the cost of the trip will be covered.



School Attendance

Sickness Absence and Attendance: If your child is unwell, please contact the school using the absence message line by calling the school by telephone (01332 862344) before 8.55am. Please do not inform us of your child(ren)'s absence by using Class Dojo.

Please note that exclusion periods will apply to certain illnesses.

Attendance, Appointments and Leave of Absence requests: Our attendance policy sets out our approach to attendance at school. Every school day counts for your child and missed time means missed learning and opportunities. There are 365 days each year; of these 190 are school days which leaves 175 non school days for holidays, family time and appointments.

Requests for leave of absence will only be authorised for rare and exceptional circumstances.

Requests for leave of absence for holidays are only likely to be agreed for the most extenuating of circumstances. The majority of requests are likely to attract a penalty notice.

When children are away from school, or being collected early from school, they almost always tell us exactly what they have been up to, or where they are going – and it goes without saying that we love hearing about their adventures! Sometimes, what we hear from the children doesn't quite match the reason that school have been given about the absence; putting children, and school staff, in a difficult position. In the spirit of openness, we ask that parents/carers share with school the reason for any absence and understand why school will request written proof of appointments when they take place during school time.

If your child's attendance drops below **94%**, you will be contacted by letter to discuss this. Where attendance drops below **90%**, parents may be eligible for fines from the Local Authority.

Weekly Attendance

Whole school attendance for this week (22nd – 26th September 2025) has been: 96.38%

Congratulations to Nightingale class for achieving: 99.67%

ATTENDANCE
WHY IS IT IMPORTANT?

89% + Below
Drastic effect on academic achievement

95%-90%
Cause for concern

100%-96%
Excellent

ABSENCE FROM SCHOOL

How do YOU measure up?

Percentage	Days Absent	Days Present	Overall
100%	0 Days	20 Weeks	20 Weeks
95%	10 Days	10 Weeks	20 Weeks
90%	20 Days	0 Weeks	20 Weeks
85%	30 Days	0 Weeks	20 Weeks

Special Menu for Thursday 2nd October



FOOD EXPLORERS

SCHOOL MEALS THAT ARE OUT OF THIS WORLD!

SPACE DAY

2ND OCTOBER

Meteor Meatballs
Veggie Comet Balls
Galaxy Pasta and Cosmic Sauce
Rocket Lolly

DERBYSHIRE
County Council

There is a special menu on Thursday 2nd October. On this day, there will be two options:

1. Meteor Meatballs
2. Veggie Comet Balls.

Date	What's On
Wednesday 1 st October	Cross Country competition at Linton Primary School.
Thursday 2 nd October	Space special menu (2 options only)
Friday 3 rd October	Individual photos with Tempest
Friday 10 th October	World Mental Health Day – wear yellow
15 th + 16 th + 17 th October mornings	Rugby coaching for all years from Melbourne Rugby Club
Friday 17 th October	Pudsey Ramble for Children in Need
Monday 20 th October	Flu immunisation in school
Tuesday 21 st October	Parents evening
27 th – 31 st October	Half-term break
Thursday 6 th November	Parents evening
Monday 15 th December	Christmas Carol service at Parish Church
Tuesday 16 th December	Dick Whittington pantomime at Derby Arena
Thursday 18 th December	Christmas Lunch in school