



Dear Parent/Carer,

We have had a lovely second week at school and the children are really settling into their new classes. We have been continuing to learn about the UN Charter for the Rights of the Child – ask your children if they can tell you what the A B C D E of rights are!

It is the second week of our wraparound care with Progressive Sports, who provide after school care from 3.30pm until 5.30pm. You will find details about how to book on the Class Dojo feed or follow the link: [Link to Progressive Sport portal](#)

We are delighted to be able to welcome two therapy dogs into school in the coming weeks. Please could you inform your child's class teacher if your child has an allergy to, or a fear of, dogs. Some children will have the opportunity to read to the therapy dogs – many of our Year 3 children will be happy to see a familiar doggy face.

There are two new dates coming up in October: wear yellow for the "Hello Yellow" World Mental Health Day on Friday 10<sup>th</sup> October and the Pudsey ramble for Children in Need on Friday 17<sup>th</sup> October.

Have a wonderful weekend.

Best wishes,

**Danielle Martin**  
**Headteacher**

**Melbourne Junior School**  
Packhorse Road  
Melbourne  
Derby  
DE73 8JE

**Head Teacher: Miss D. Martin**  
Email: [info@melbourne-jun.derbyshire.sch.uk](mailto:info@melbourne-jun.derbyshire.sch.uk)  
Web: [www.melbourne-jun.derbyshire.sch.uk](http://www.melbourne-jun.derbyshire.sch.uk)  
Telephone: 01332 862344

## History timeline

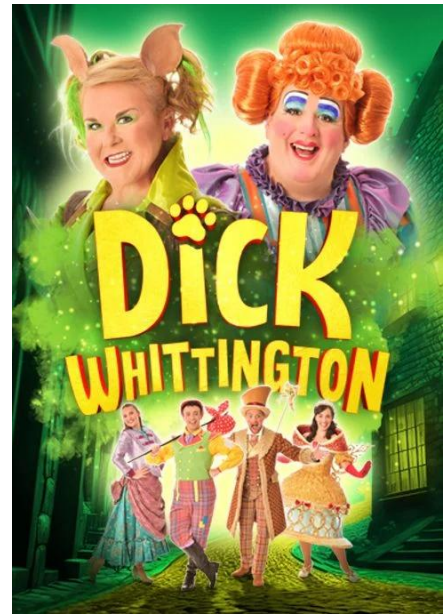
Over the last few years we have had an excellent PTA who have supported the school. Most recently the money raised from the events have paid for the outdoor gym equipment and today the History timeline, purchased with money from the PTA events, has been fitted in the entrance hall.



If you are interested in supporting the PTA at events, please contact Lucy Booth, the PTA Chair, via the school office email: [info@melbourne-jun.derbyshire.sch.uk](mailto:info@melbourne-jun.derbyshire.sch.uk)

## Pantomime

We are pleased to let you know that a whole school trip to see the pantomime Dick Whittington has been planned for Tuesday 16<sup>th</sup> December at Derby Arena. The cost of the trip is £17.90 which includes the theatre ticket and the cost of the coach to get there and back. Please can we request that payment is made by Friday 3<sup>rd</sup> October as we need to confirm numbers and pay for the theatre tickets in advance. If your child is eligible for Free School Meals, the cost of the trip will be covered.



## Pupil Premium and Free School Meals

If you think your child may be eligible for Free School Meals, please follow the link below to check their eligibility:

[Free School Meals eligibility check](#)

## School Attendance

**Sickness Absence and Attendance:** If your child is unwell, please contact the school using the absence message line by calling the school by telephone (01332 862344) before 8.55am. Please do not inform us of your child(ren)'s absence by using Class Dojo.

Please note that exclusion periods will apply to certain illnesses.

**Attendance, Appointments and Leave of Absence requests:** Our attendance policy sets out our approach to attendance at school. Every school day counts for your child and missed time means missed learning and opportunities. There are 365 days each year; of these 190 are school days which leaves 175 non school days for holidays, family time and appointments.

Requests for leave of absence will only be authorised for rare and exceptional circumstances.

Requests for leave of absence for holidays are only likely to be agreed for the most extenuating of circumstances. The majority of requests are likely to attract a penalty notice.

When children are away from school, or being collected early from school, they almost always tell us exactly what they have been up to, or where they are going – and it goes without saying that we love hearing about their adventures! Sometimes, what we hear from the children doesn't quite match the reason that school have been given about the absence; putting children, and school staff, in a difficult position. In the spirit of openness, we ask that parents/carers share with school the reason for any absence and understand why school will request written proof of appointments when they take place during school time.

If your child's attendance drops below **94%**, you will be contacted by letter to discuss this. Where attendance drops below **90%**, parents may be eligible for fines from the Local Authority.

Special Menu for Thursday 2<sup>nd</sup> October

There is a special menu on Thursday 2<sup>nd</sup> October – see poster below. On this day, there will be two options:

1. Meteor Meatballs
2. Veggie Comet Balls.

## Dates for the diary

Date	What's On
Thursday 2 <sup>nd</sup> October	Space special menu (2 options only)
Friday 10 <sup>th</sup> October	World Mental Health Day – wear yellow
Friday 17 <sup>th</sup> October	Pudsey Ramble for Children in Need
Monday 20 <sup>th</sup> October	Flu immunisation in school
Tuesday 21 <sup>st</sup> October	Parents evening
27 <sup>th</sup> – 31 <sup>st</sup> October	Half-term break
Thursday 6 <sup>th</sup> November	Parents evening
Tuesday 16 <sup>th</sup> December	Dick Whittington pantomime at Derby Arena